

z bin	$\langle P_T \rangle$	$\langle x \rangle$	$\langle Q^2 \rangle$
0.2-0.3	0.39	0.24	1.90
0.3-0.4	0.40	0.27	1.91
0.4-0.5	0.40	0.27	1.89
0.5-0.6	0.39	0.26	1.84
0.6-0.7	0.37	0.23	1.72
0.7-0.8	0.31	0.19	1.53
0.8-0.9	0.23	0.13	1.13

Table 1:  $\pi^+$  z-binning

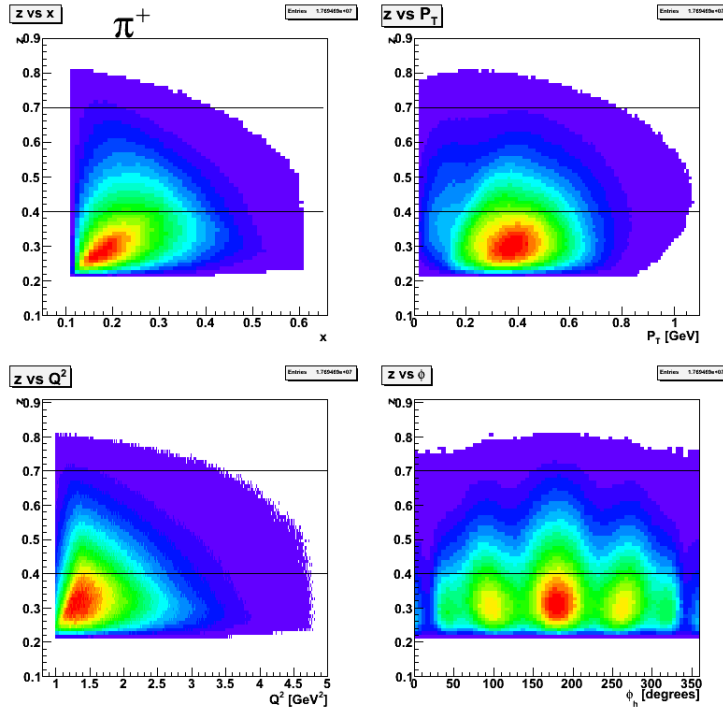


Figure 1:  $\pi^+$  z-distributions.

$P_T$ bin	$\langle z \rangle$	$\langle x \rangle$	$\langle Q^2 \rangle$
0.0-0.2	0.51	0.29	2.01
0.2-0.4	0.49	0.27	1.93
0.4-0.6	0.49	0.25	1.86
0.6-0.8	0.49	0.22	1.71
0.8-1.0	0.48	0.18	1.48

Table 2:  $\pi^+$   $P_T$ -binning

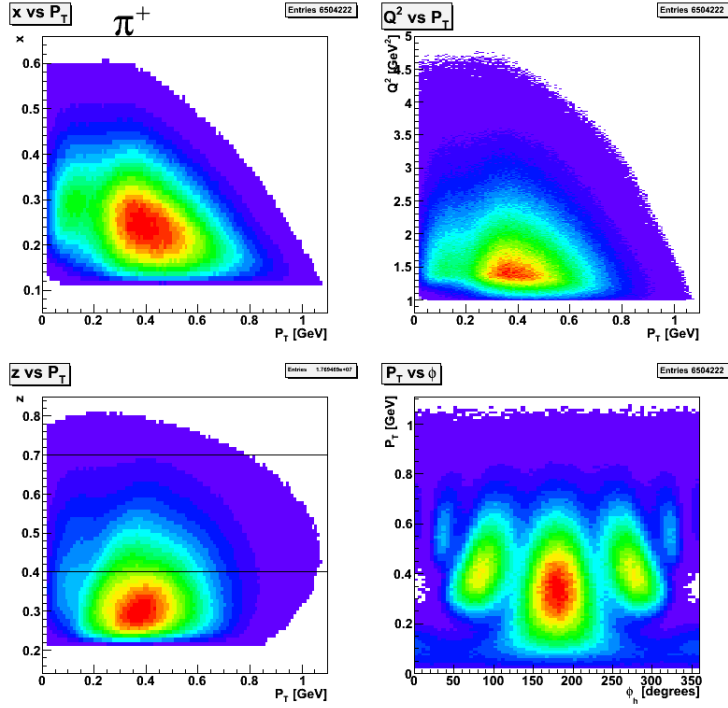


Figure 2:  $\pi^+$   $P_T$ -distributions.

$x$ bin	$\langle z \rangle$	$\langle P_T \rangle$	$\langle Q^2 \rangle$
0.1-0.2	0.51	0.44	1.27
0.2-0.3	0.50	0.40	1.73
0.3-0.4	0.49	0.36	2.34
0.4-0.5	0.47	0.32	3.10
0.5-0.6	0.46	0.28	3.83

Table 3:  $\pi^+$   $x$ -binning

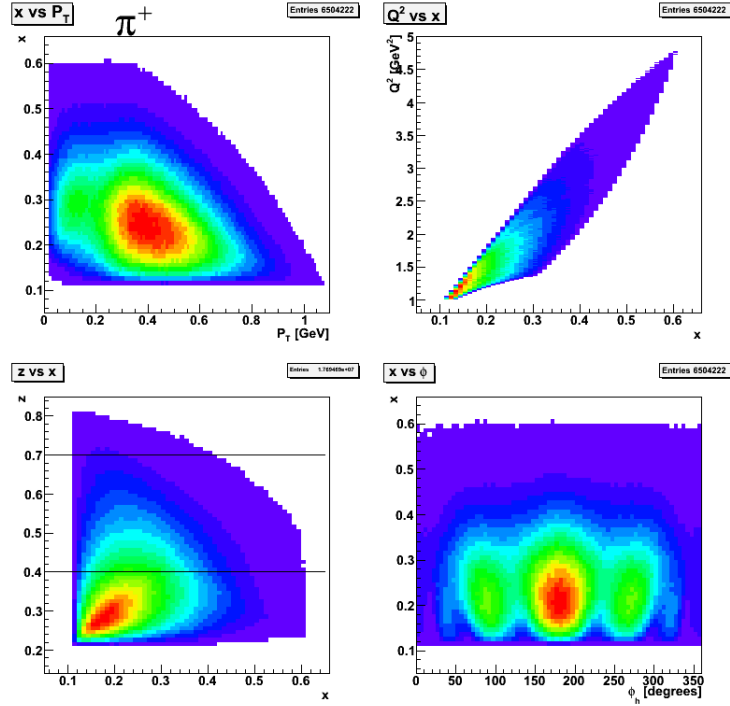


Figure 3:  $\pi^+$   $x$ -distributions.

$Q^2$ bin	$\langle x \rangle$	$\langle z \rangle$	$\langle P_T \rangle$
1.0-1.7	0.19	0.50	0.41
1.7-2.4	0.28	0.49	0.39
2.4-3.1	0.36	0.49	0.37
3.1-3.8	0.44	0.48	0.34
3.8-4.5	0.52	0.46	0.30

Table 4:  $\pi^+$   $Q^2$ -binning

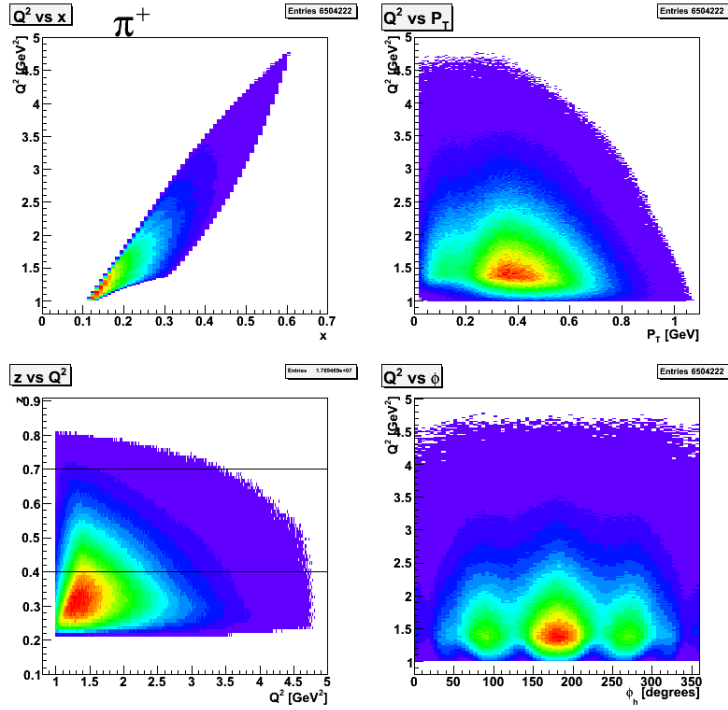


Figure 4:  $\pi^+$   $Q^2$ -distributions.

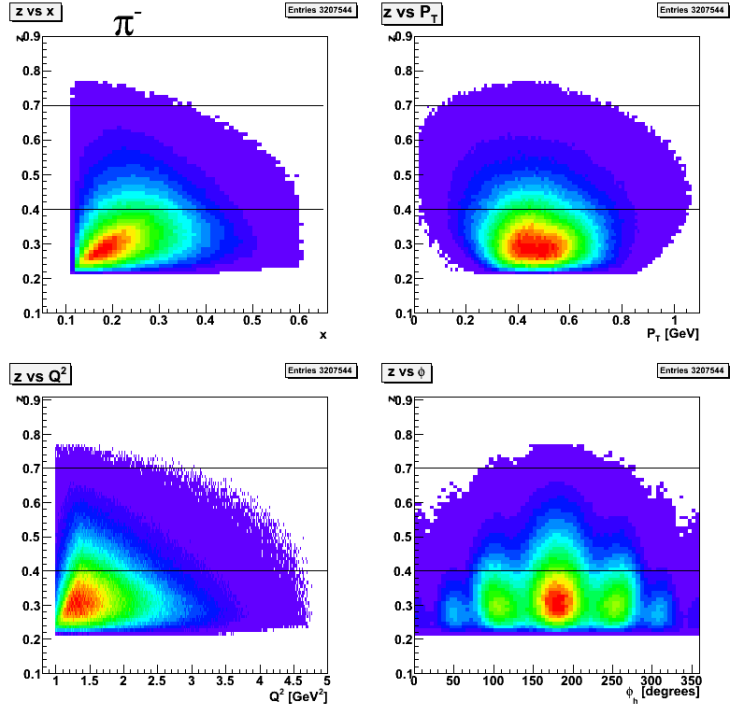


Figure 5:  $\pi^-$  z-distributions.

z bin	$\langle P_T \rangle$	$\langle x \rangle$	$\langle Q^2 \rangle$
0.2-0.3	0.49	0.24	1.90
0.3-0.4	0.48	0.27	1.89
0.4-0.5	0.47	0.27	1.84
0.5-0.6	0.45	0.26	1.77
0.6-0.7	0.42	0.23	1.65
0.7-0.8	0.40	0.19	1.45

Table 5:  $\pi^-$  z-binning

$P_T$ bin	$\langle z \rangle$	$\langle x \rangle$	$\langle Q^2 \rangle$
0.0-0.2	0.50	0.34	2.05
0.2-0.4	0.48	0.29	1.99
0.4-0.6	0.48	0.25	1.86
0.6-0.8	0.47	0.22	1.71
0.8-1.0	0.47	0.18	1.47

Table 6:  $\pi^-$   $P_T$ -binning

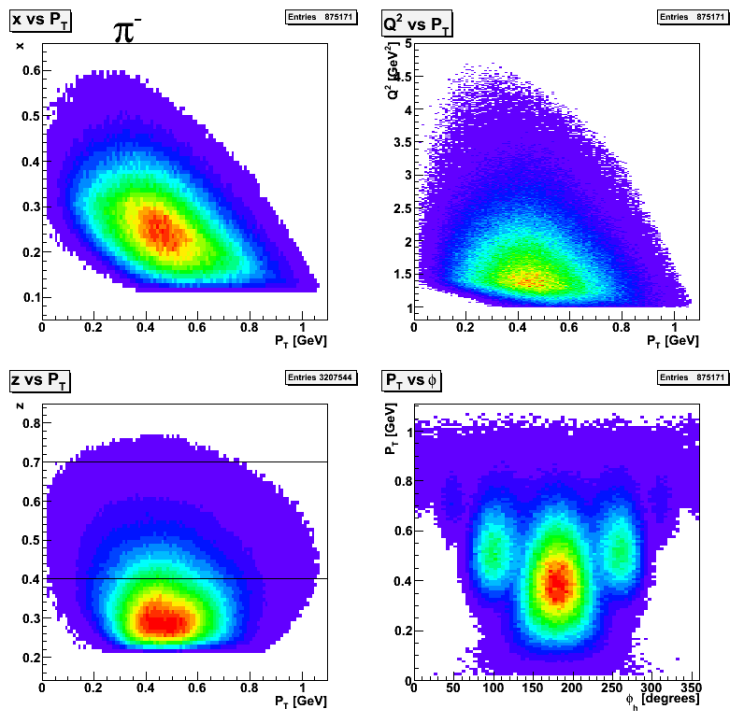


Figure 6:  $\pi^-$   $P_T$ -distributions.

$x$ bin	$\langle z \rangle$	$\langle P_T \rangle$	$\langle Q^2 \rangle$
0.1-0.2	0.49	0.36	1.27
0.2-0.3	0.48	0.33	1.71
0.3-0.4	0.47	0.30	2.26
0.4-0.5	0.46	0.28	2.98
0.5-0.6	0.45	0.25	3.80

Table 7:  $\pi^-$   $x$ -binning

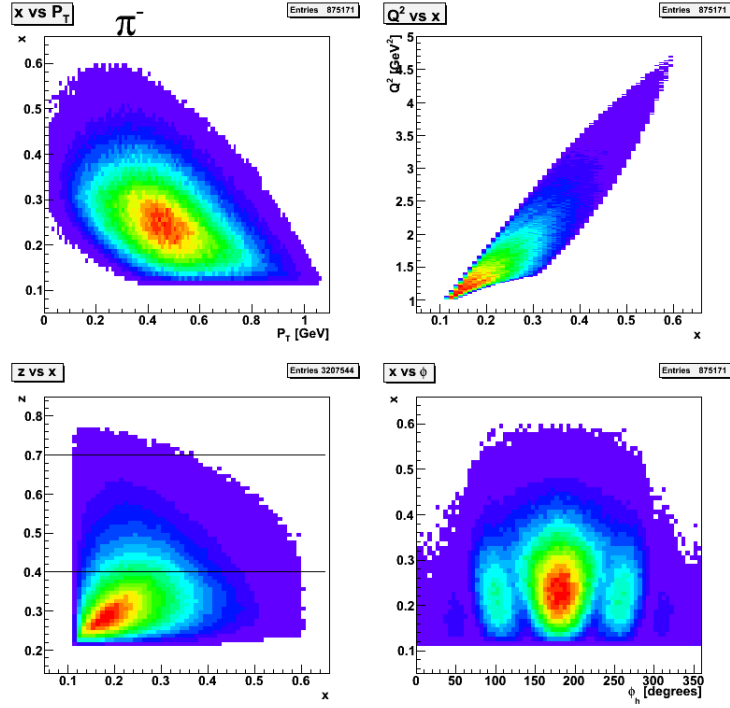


Figure 7:  $\pi^-$   $x$ -distributions.

$Q^2$ bin	$\langle x \rangle$	$\langle z \rangle$	$\langle P_T \rangle$
1.0-1.7	0.19	0.48	0.51
1.7-2.4	0.28	0.48	0.47
2.4-3.1	0.36	0.47	0.45
3.1-3.8	0.44	0.46	0.42
3.8-4.5	0.52	0.45	0.38

Table 8:  $\pi^-$   $Q^2$ -binning

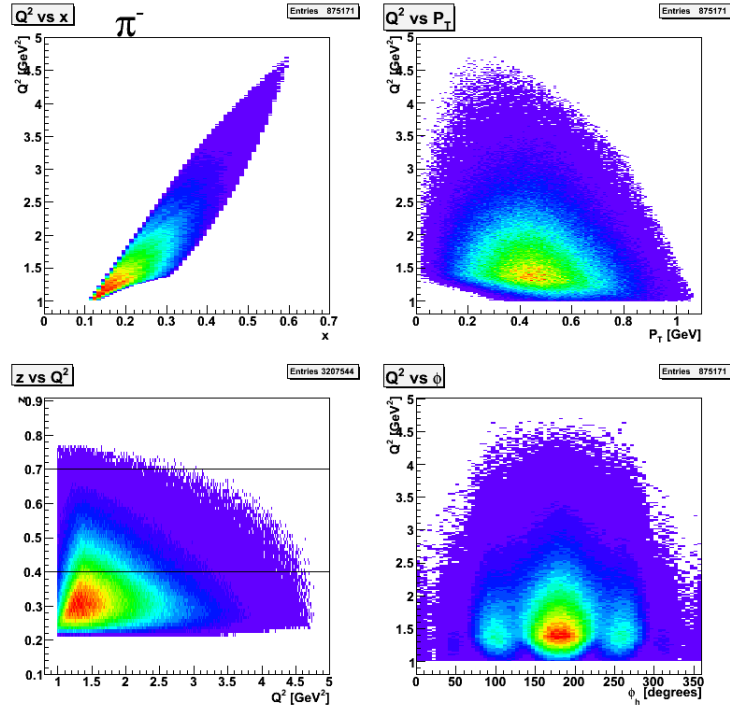


Figure 8:  $\pi^-$   $Q^2$ -distributions.



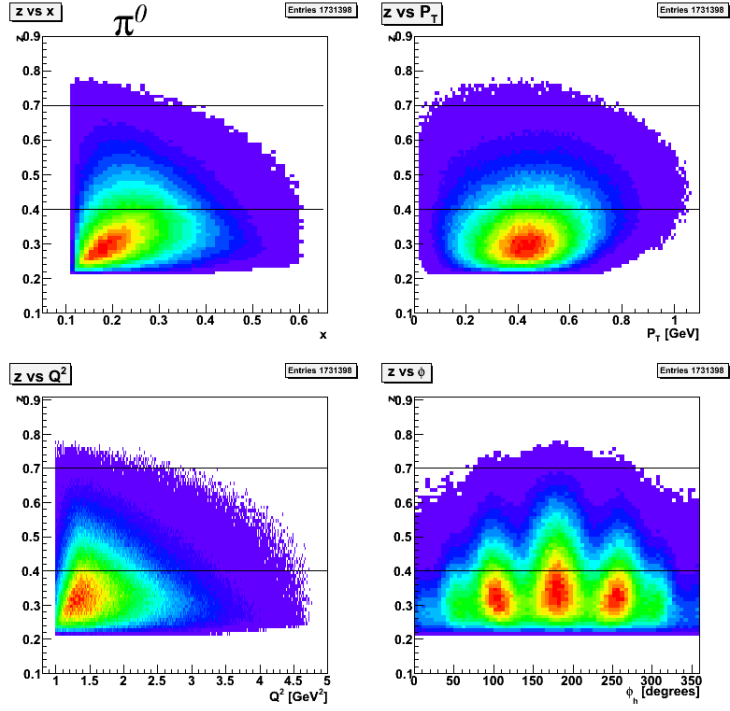


Figure 9:  $\pi^0$  z-distributions.

z bin	$\langle P_T \rangle$	$\langle x \rangle$	$\langle Q^2 \rangle$
0.2-0.3	0.34	0.27	1.89
0.3-0.4	0.43	0.27	1.89
0.4-0.5	0.47	0.27	1.85
0.5-0.6	0.47	0.25	1.79
0.6-0.7	0.46	0.23	1.67
0.7-0.8	0.41	0.19	1.47

Table 9:  $\pi^0$  z-binning

$P_T$ bin	$\langle z \rangle$	$\langle x \rangle$	$\langle Q^2 \rangle$
0.0-0.2	0.48	0.28	1.92
0.2-0.4	0.48	0.27	1.90
0.4-0.6	0.48	0.25	1.85
0.6-0.8	0.48	0.22	1.73
0.8-1.0	0.48	0.18	1.49

Table 10:  $\pi^0$   $P_T$ -binning

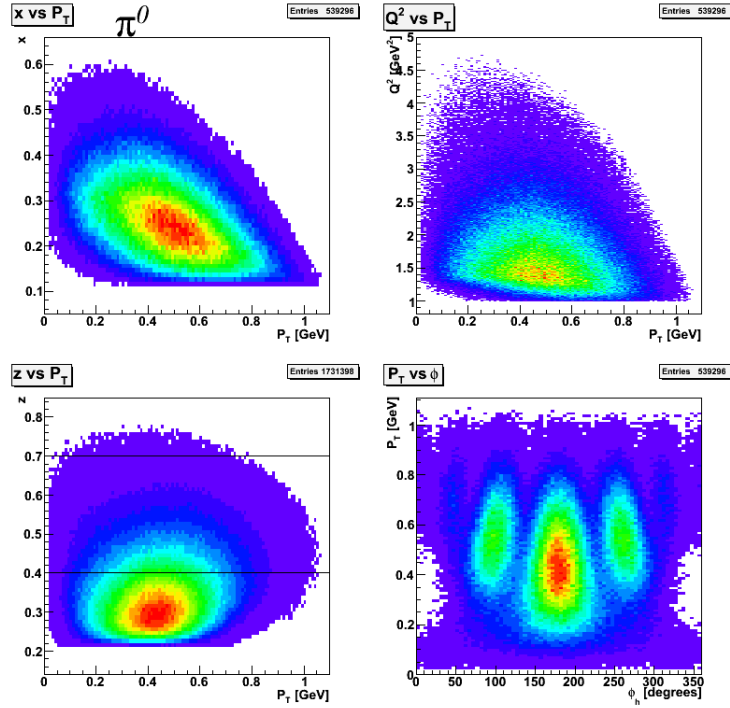


Figure 10:  $\pi^0$   $P_T$ -distributions.

$x$ bin	$\langle z \rangle$	$\langle P_T \rangle$	$\langle Q^2 \rangle$
0.1-0.2	0.49	0.36	1.27
0.2-0.3	0.48	0.33	1.71
0.3-0.4	0.47	0.30	2.26
0.4-0.5	0.46	0.28	2.98
0.5-0.6	0.45	0.25	3.80

Table 11:  $\pi^0$   $x$ -binning

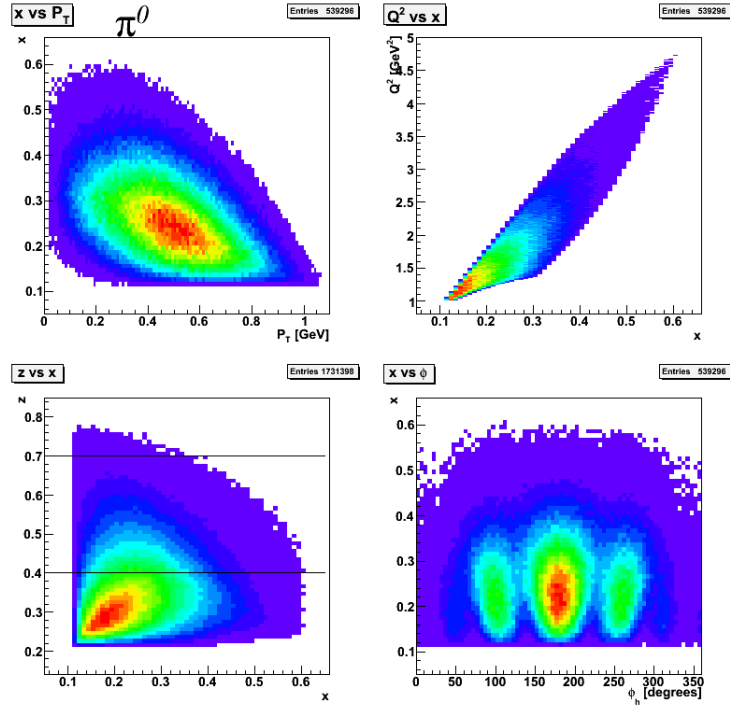


Figure 11:  $\pi^0$   $x$ -distributions.

$Q^2$ bin	$\langle x \rangle$	$\langle z \rangle$	$\langle P_T \rangle$
1.0-1.7	0.20	0.48	0.34
1.7-2.4	0.29	0.48	0.32
2.4-3.1	0.37	0.47	0.31
3.1-3.8	0.44	0.46	0.30
3.8-4.5	0.52	0.45	0.27

Table 12:  $\pi^0$   $Q^2$ -binning

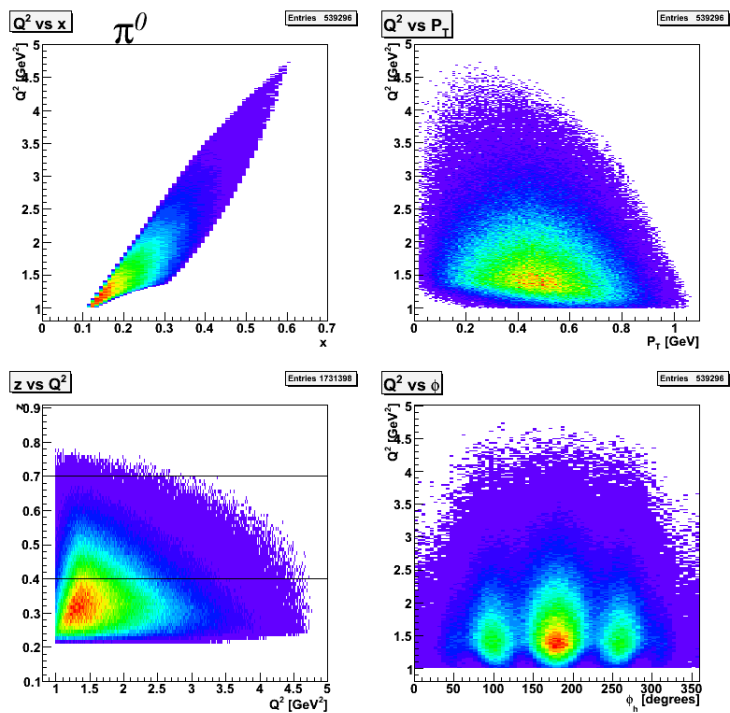


Figure 12:  $\pi^0$   $Q^2$ -distributions.